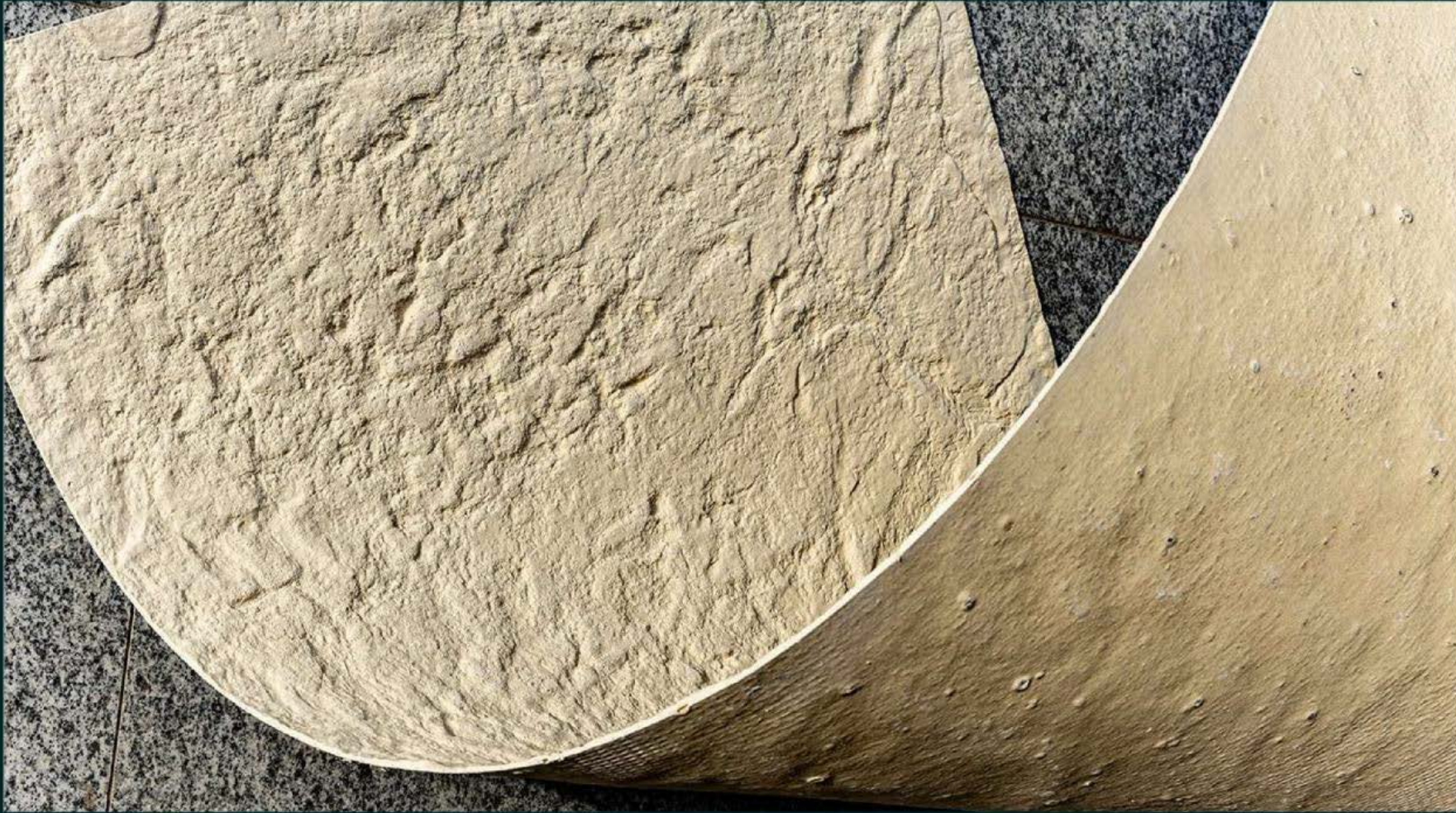


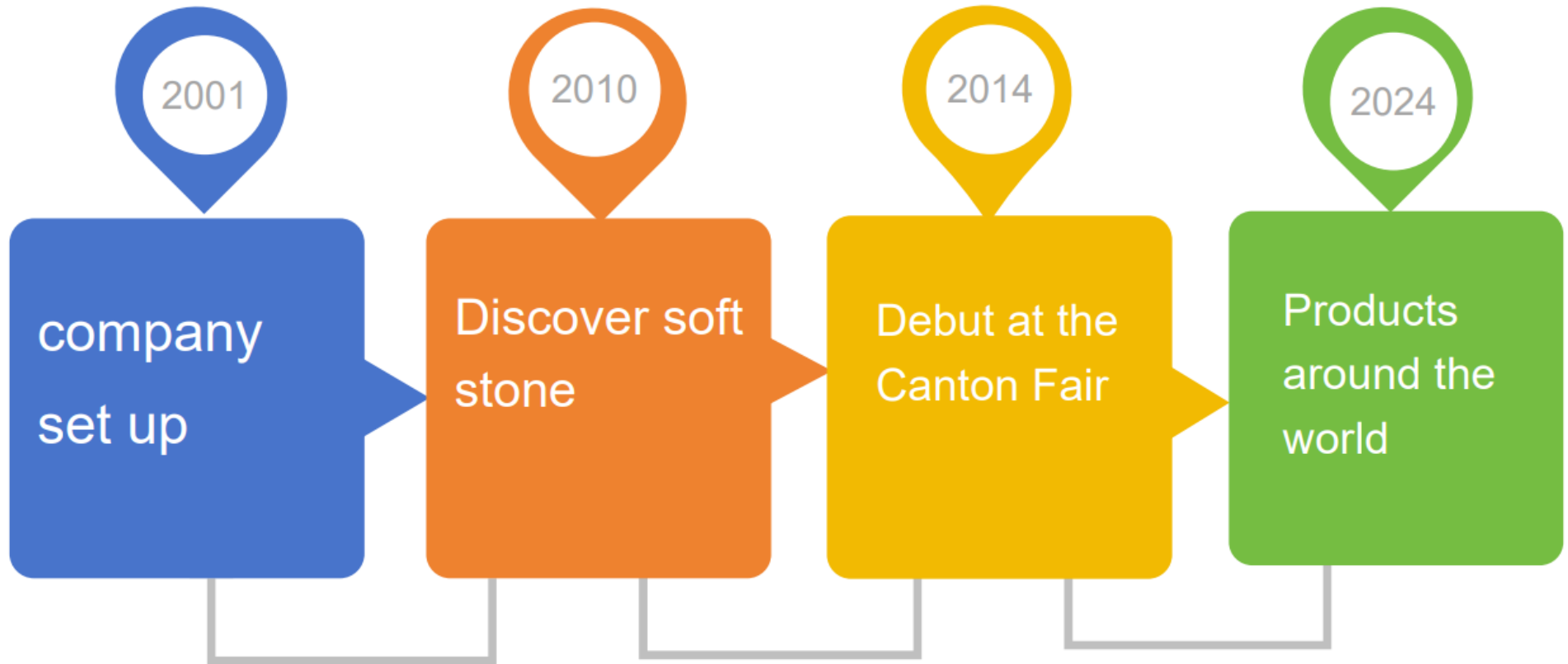
# PLATINUM LIFE

——Material science that shapes the future!



2025  
↑

————Material science that shapes the future!



# ABOUT US:

## NO.1 PROFESSIONAL SOFT STONE MANUFACTURER

Our soft stone products combine the texture and appearance of natural stone and wood, they are widely used in interior and exterior building decoration to meet the different needs of our customers



### Fire-Resistant

Built to protect against fire hazards.



### Waterproof

Prevents moisture and water damage.



### Warranty

Long-term quality guarantee.



### International Standards

Certified for global quality and safety.



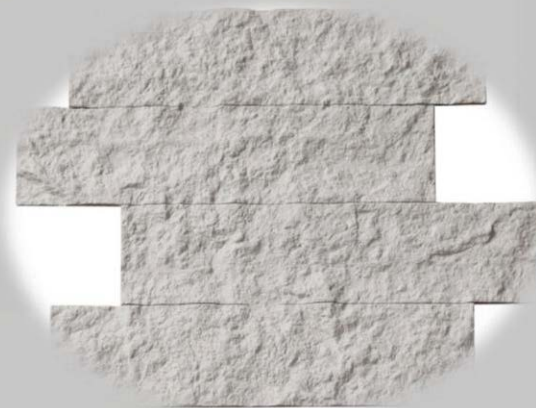
# OUR MATERIALS

proud to offer cutting-edge cladding materials crafted from the latest European technology.

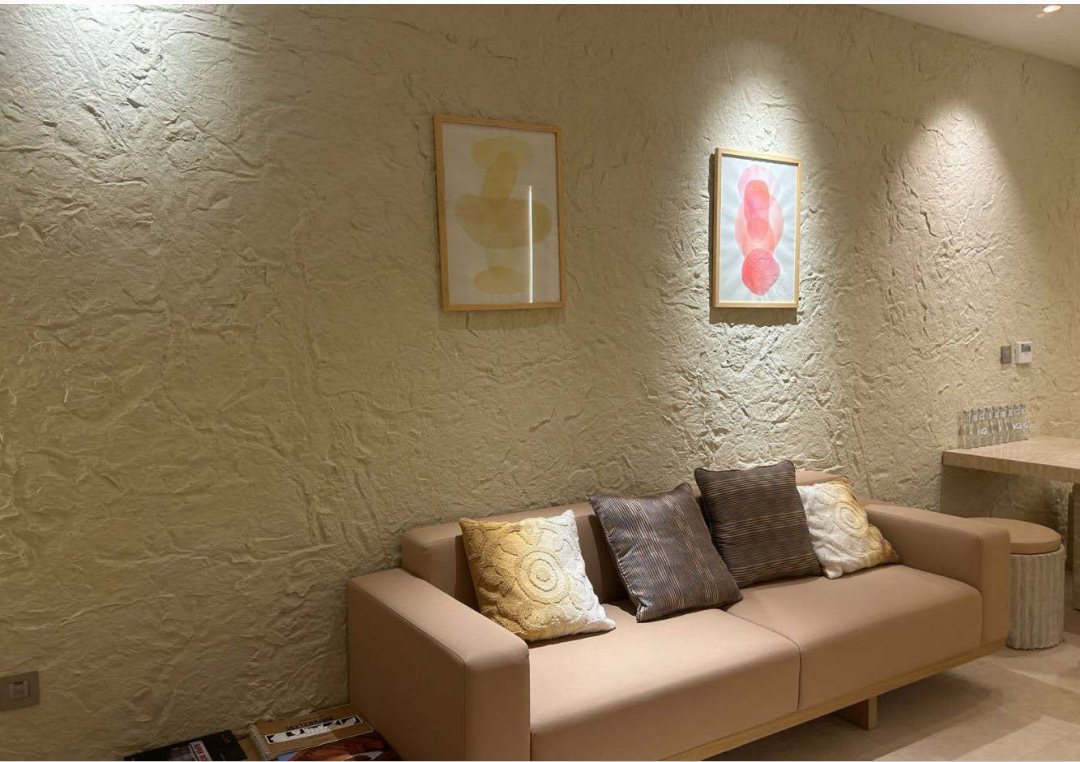
MCM



SOFT STONE TILES

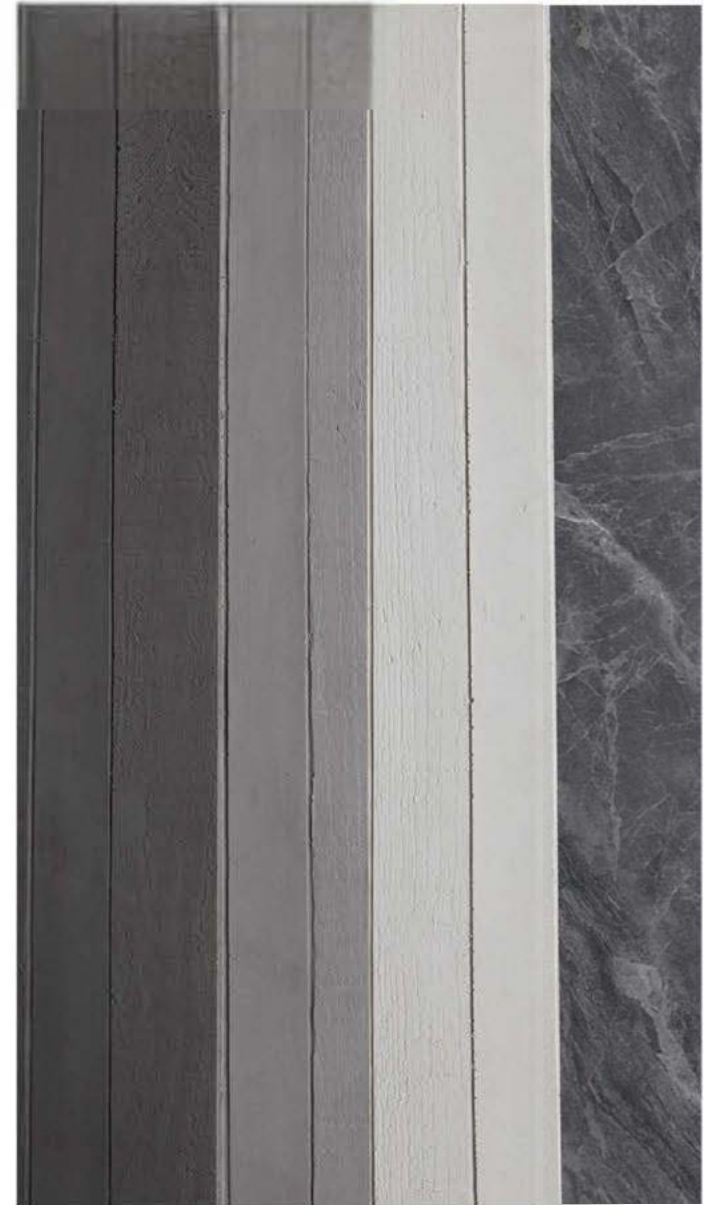
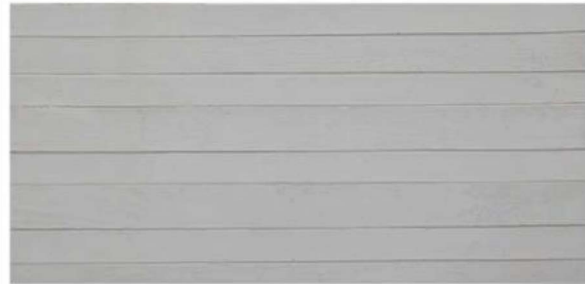
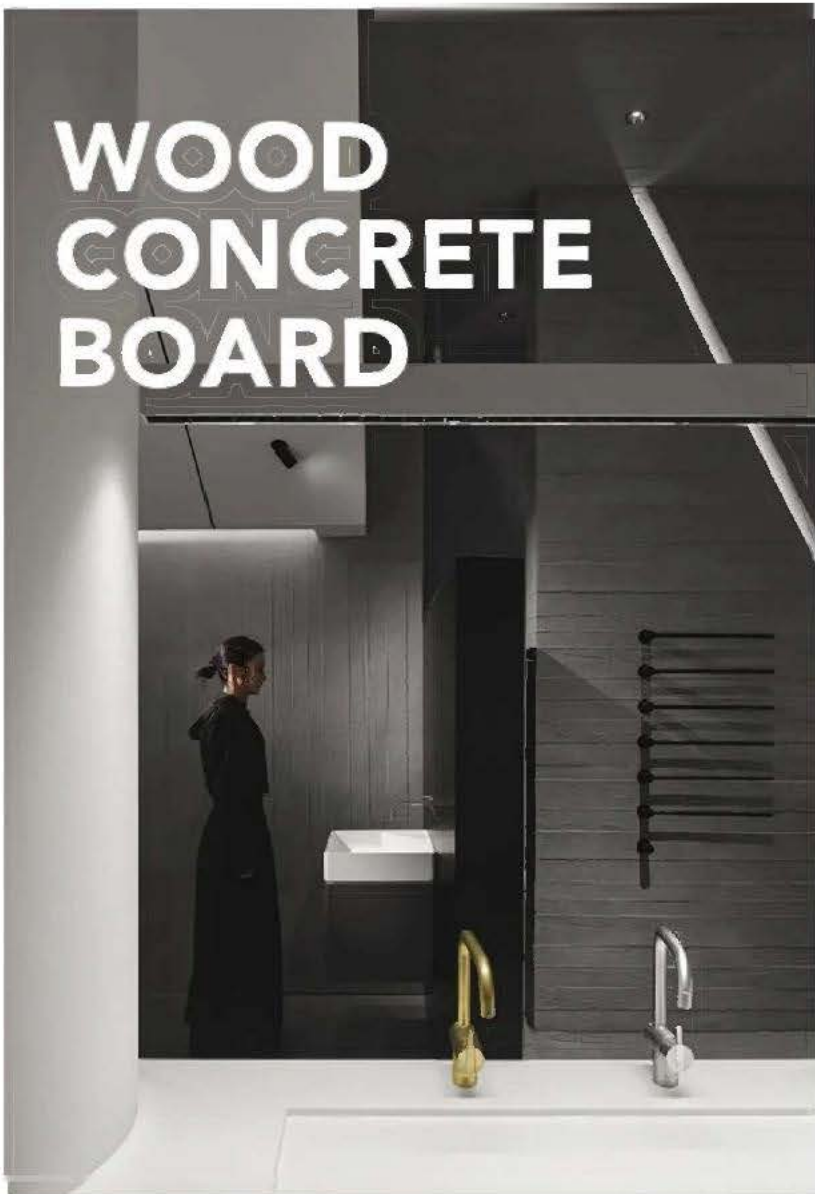


**OUR MATERIALS:**  
**“O” joint, pattern continued**



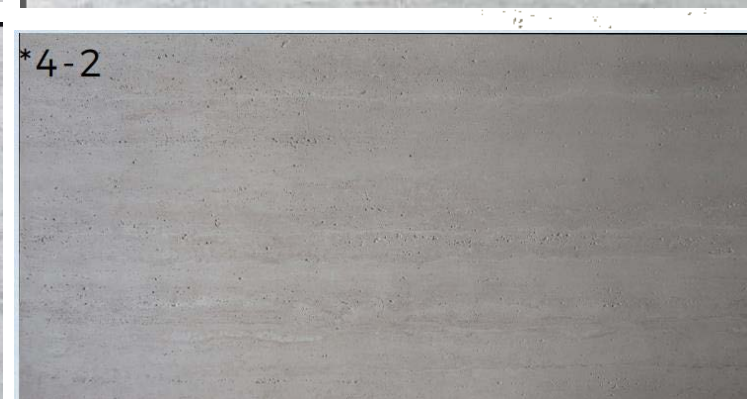
-----Material science that shapes the future!

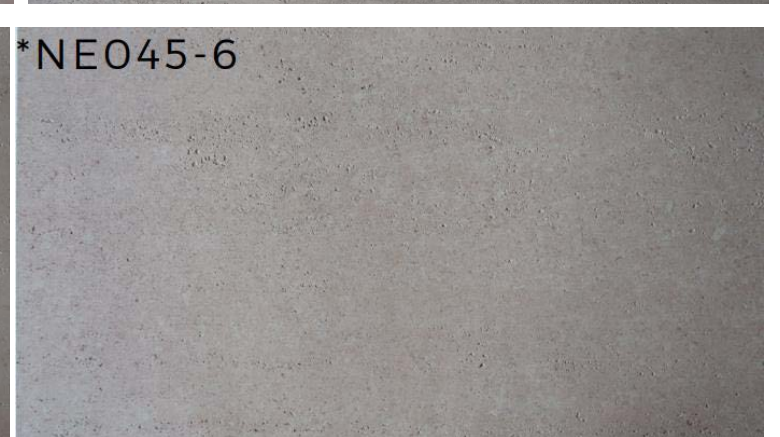
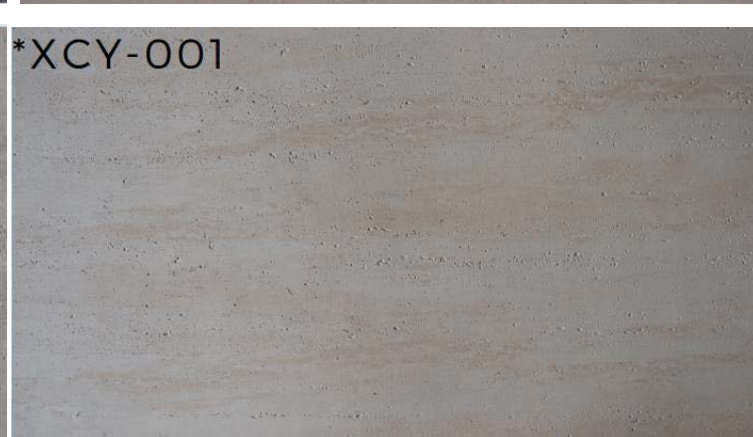
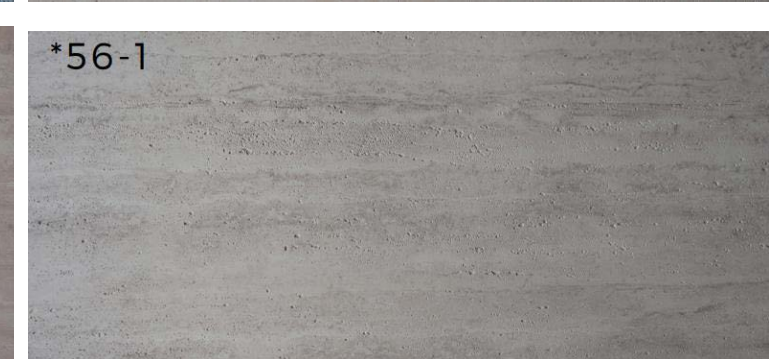
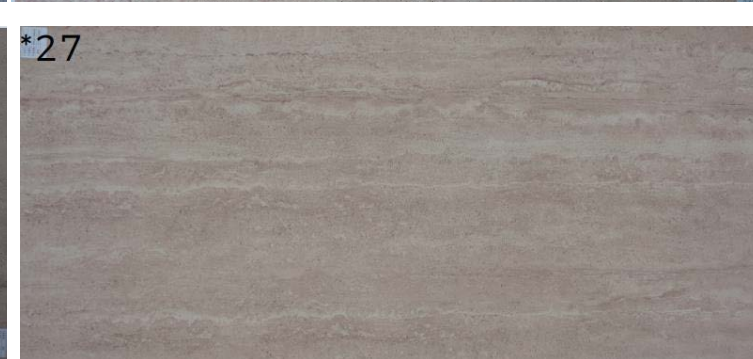
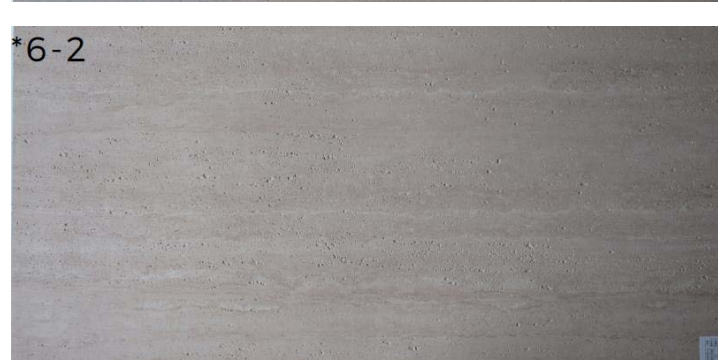
# WOOD CONCRETE BOARD

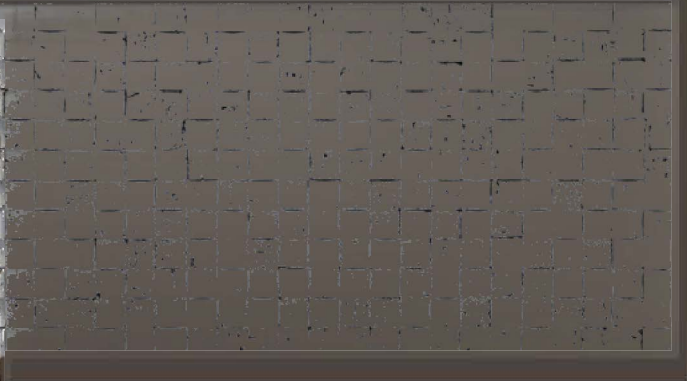


# TRAVERTINE





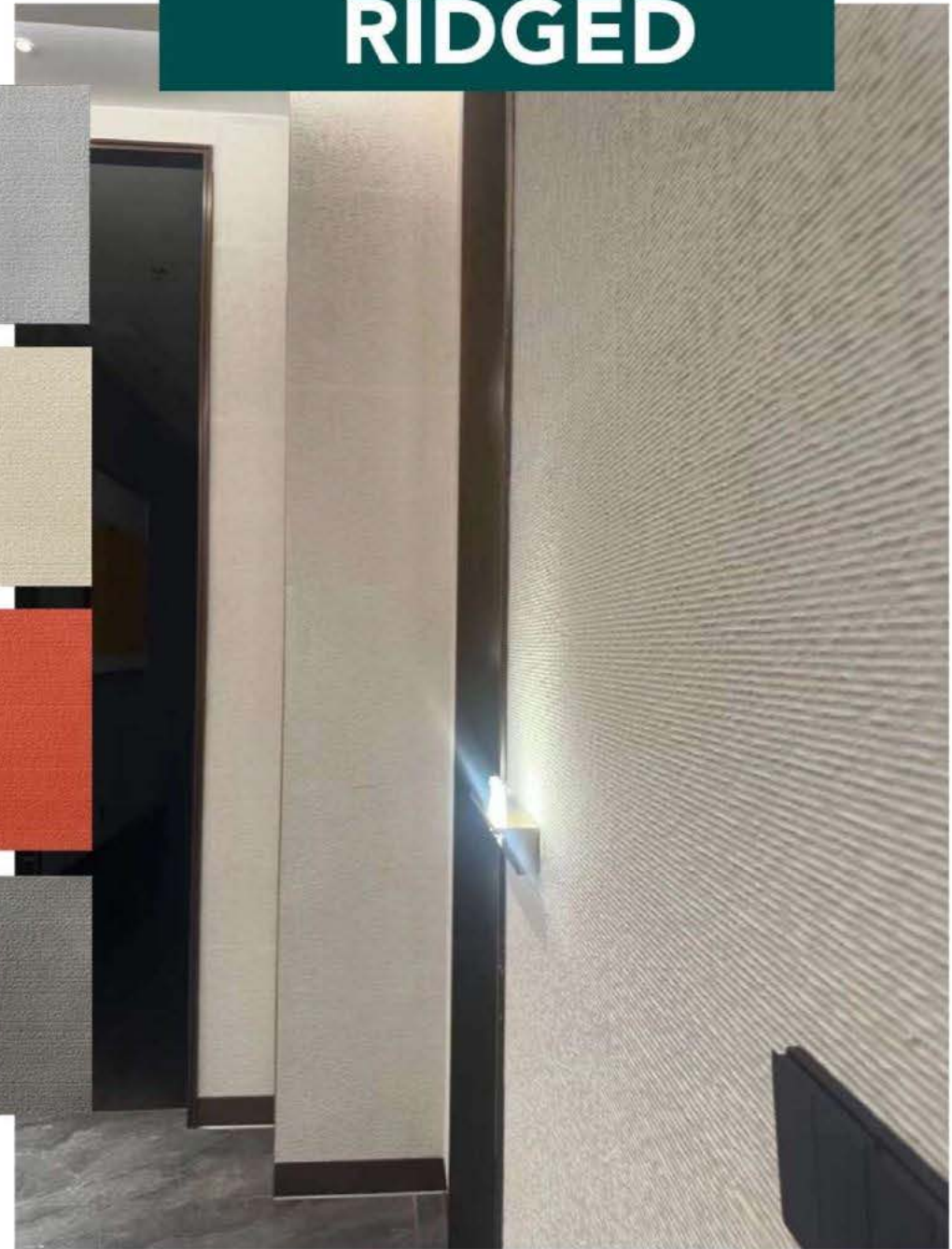




# TRAVERTINE MOSAIC



# STONE RIDGED



# ROUGH GRANITE





**RIPPLE  
BOARD**





**STARMOON  
STONE**

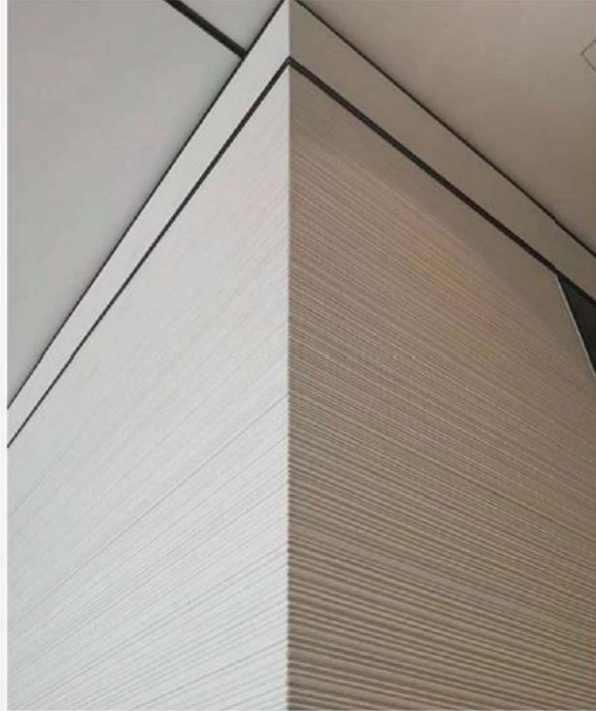




# LINE STONE BOARD

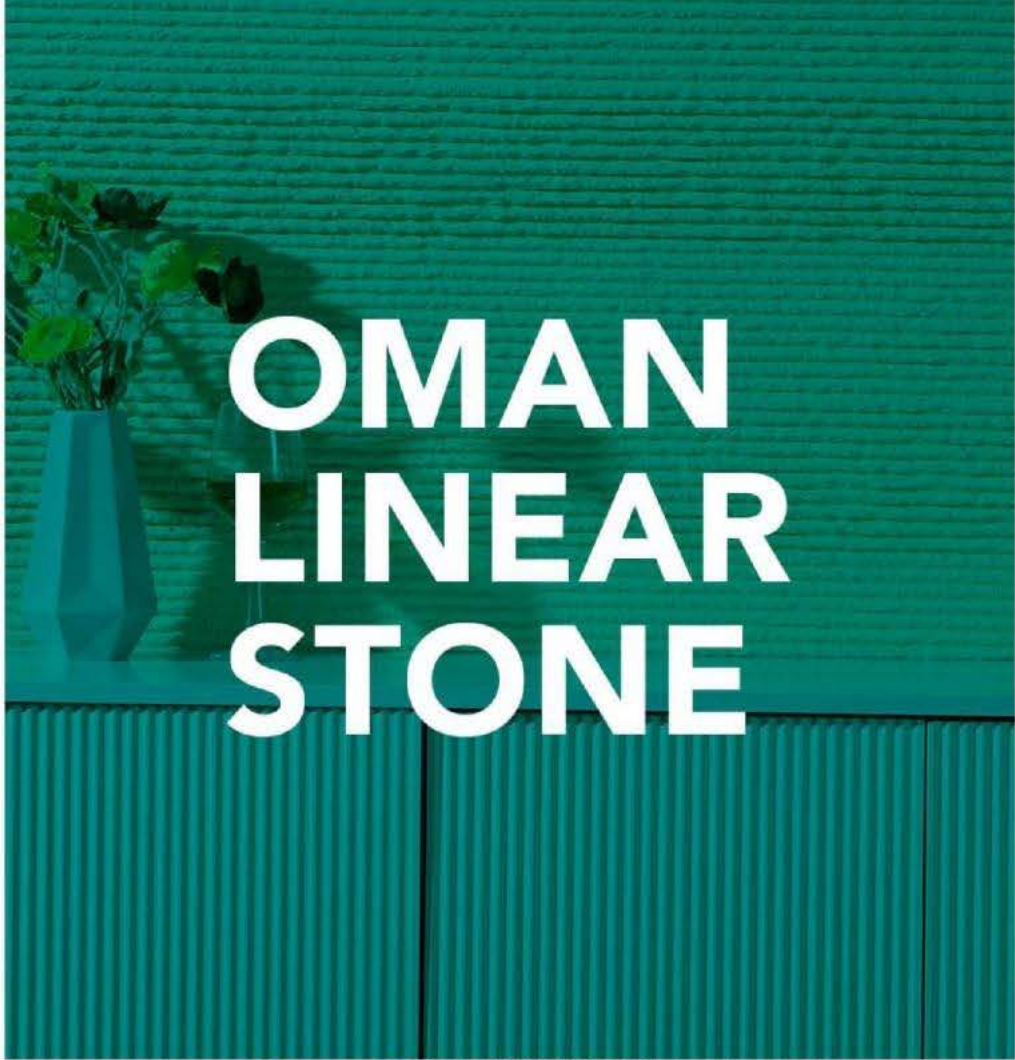


**FINE  
LINE  
STONE  
BOARD**



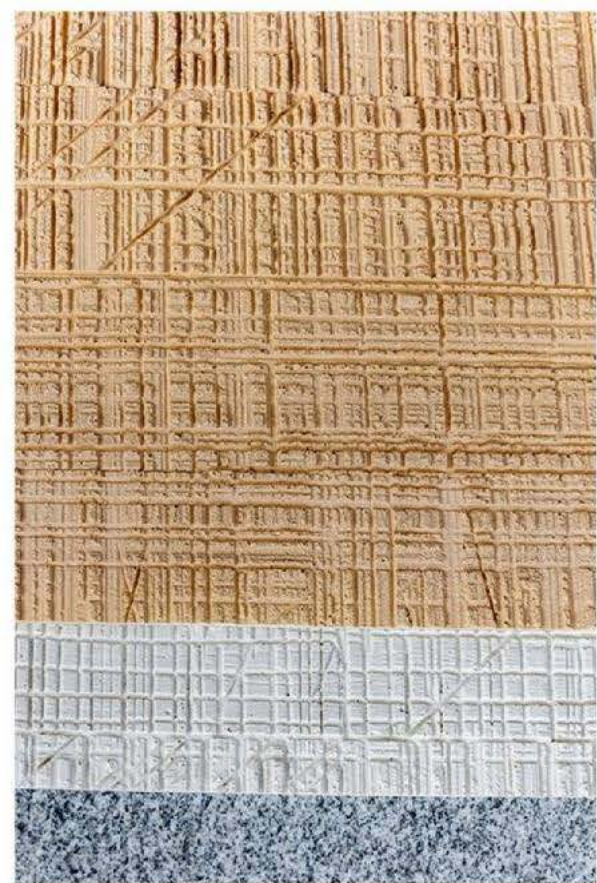
# ROCKCUT STONE





# OMAN LINEAR STONE

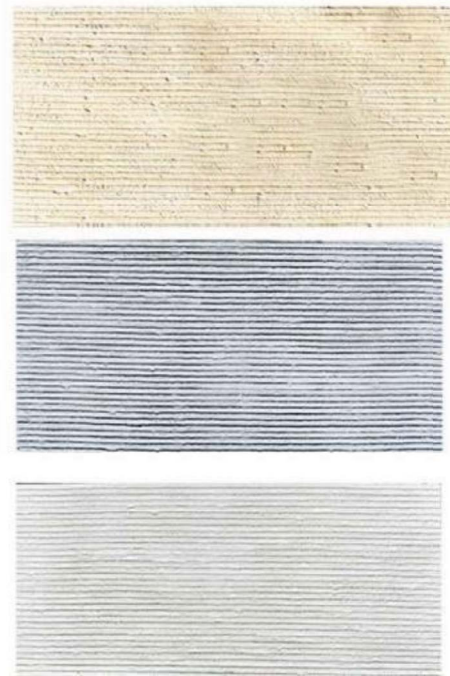
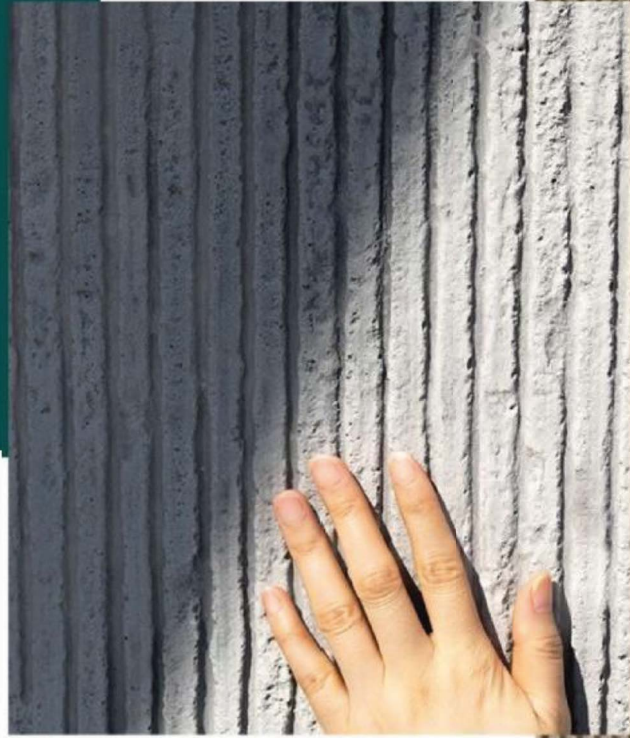




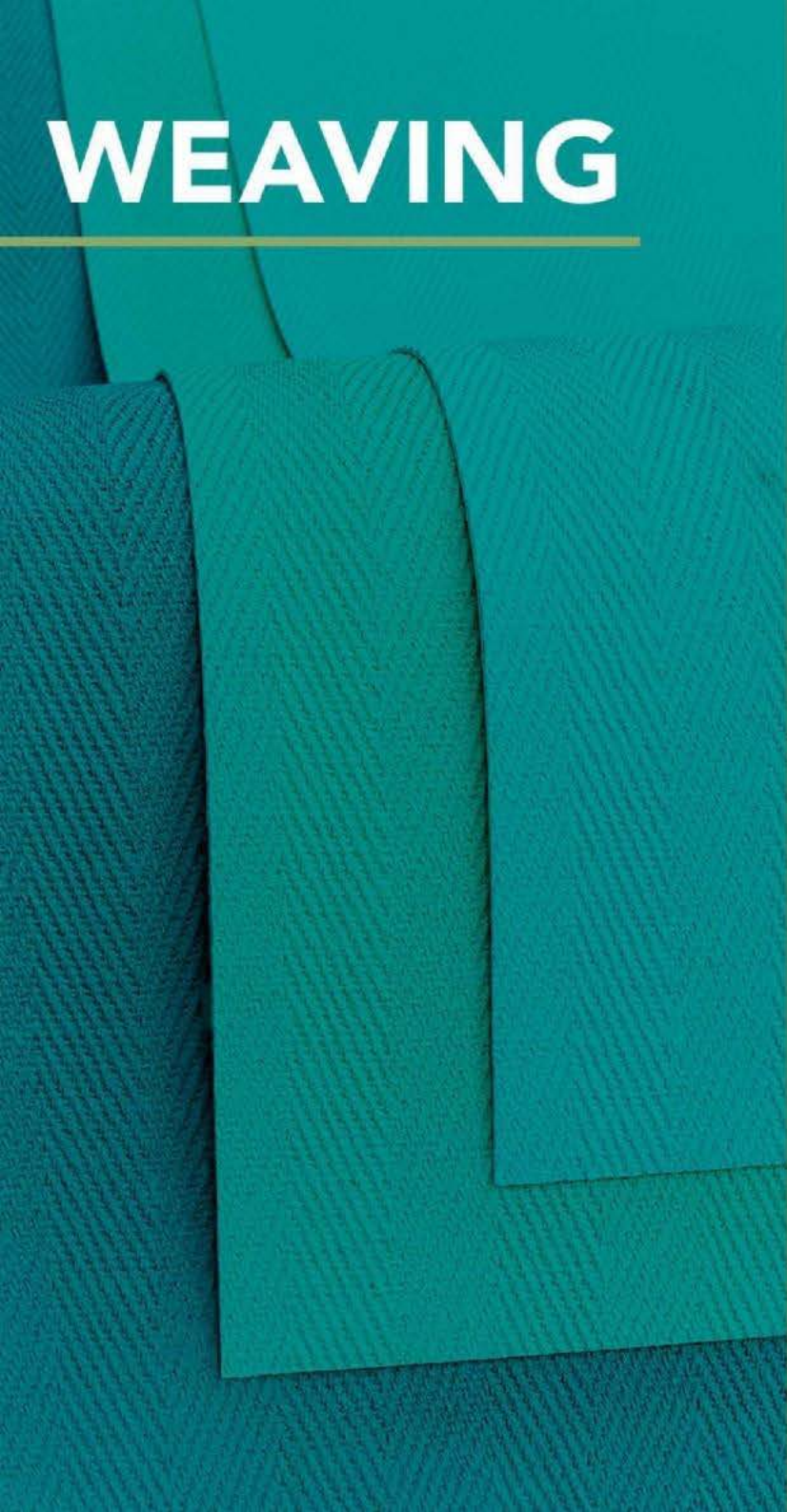
**SAWING  
WOOD**



# SQUARE LINE STONE



# WEAVING



# ROUND LINE STONE



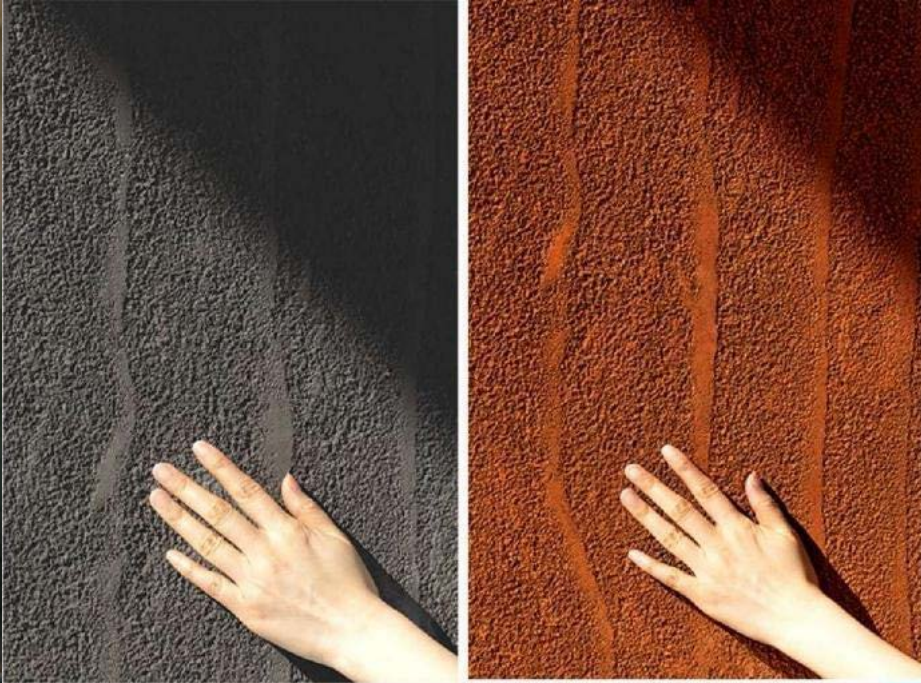
# CONCRETE BOARD



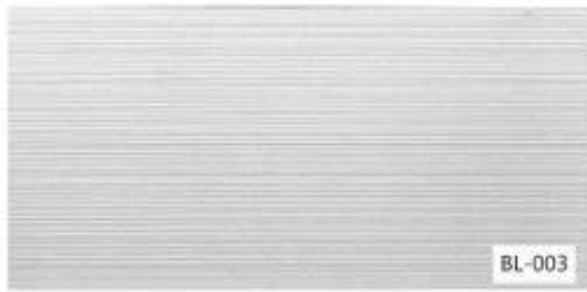
# MURE TC STONE








# SOFT STONE




# SOFT STONE




# SOFT STONE



MB-001




W081A



LYF-001



WY024



W063A



W061A



W064A



WX-022

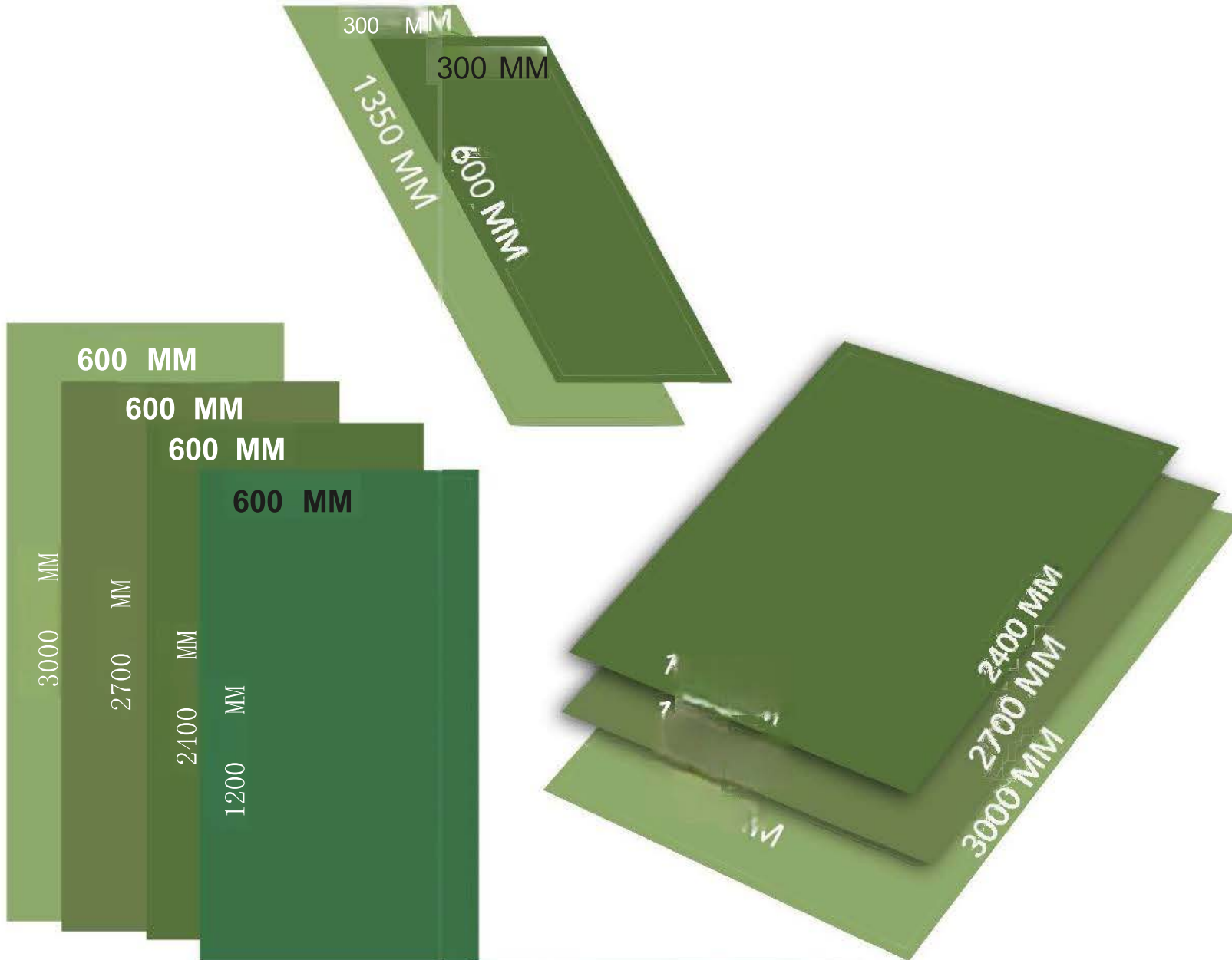


HT-2003

# SOFT STONE



----- Material science that shapes the future!



## MCM *SHEETS* SIZES

- 300X600 MM
- 300X1350 MM
- 600X1200 MM
- 600X2400 MM
- 600X2700 MM
- 600X3000 MM
- 1200X2400 MM
- 1200X2700 MM
- 1200X3000 MM
- 1200X3200 MM

# PLATINUM LIFE

-----Material science that shapes the future!

**Dr. Hosam Shaheen**

**Mob. 00966 541222246**

**Email. [drhosam.sha@gmail.com](mailto:drhosam.sha@gmail.com)**